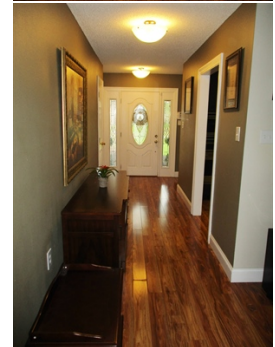
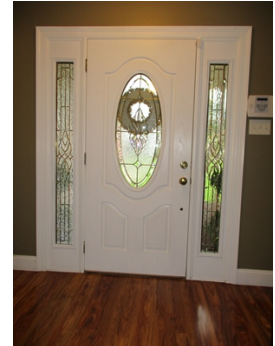


Roomy Open Floor Plan

Easy Access To I-10



26 Oxford Drive, LaPlace, LA 70068

WEB: 26OxfordDrive.com

- » Beds: 3 | Baths: 2 Full
- » MLS #: 2167848
- » Single Family
- » Jenn-Air Smooth Cook Top
- » All Stainless Appliances Included
- » Security System
- » Granite Counter Tops
- » Master Bathroom Has An Oversized Shower

QR Code



**CALL
Rich**

(985) 652-7653 (Office)

(504) 388-7653 (Cell)

remaxbest@yahoo.com

http://richardlieberman.remax-louisiana.com

**RE/MAX
BEST**

Re/Max Best
2925 Highway 51, Suite B
LaPlace, LA 70068
(985) 652-7653

Roomy Open Floor Plan*Spacious Kitchen Is A Chef's Delight With Jenn-Air Smooth Cook Top, With All Stainless Appliances Included (Oven, Refrigerator, Microwave and Dishwasher)*Lots of Cabinet Space, Granite Counter Tops*Large Greatroom For Entertaining*Master Bath Has An Over Sized Shower With Seat*Security System*Covered Patio*Shed and More*Easy Access To I-10

